

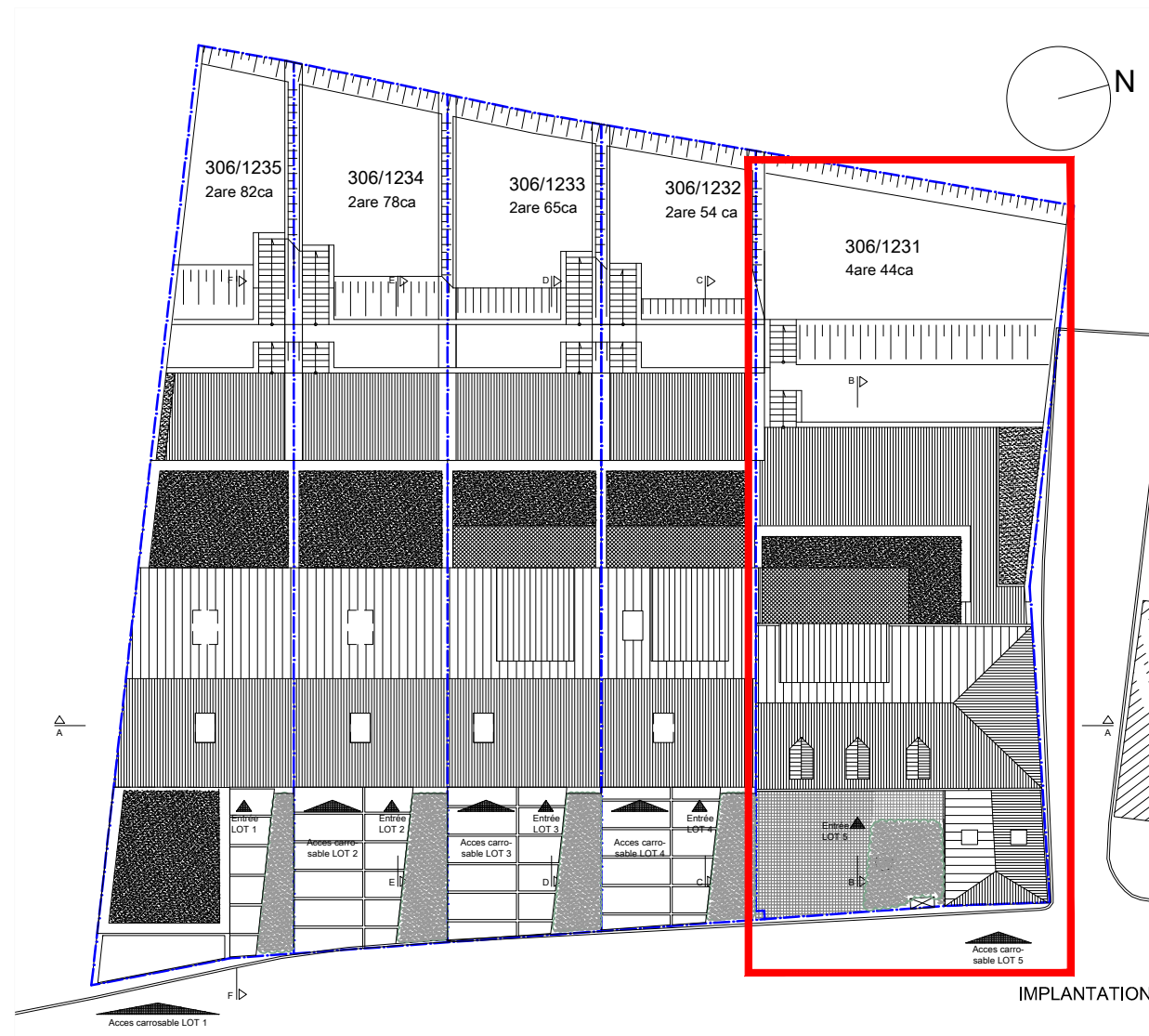


Projet Altlinster

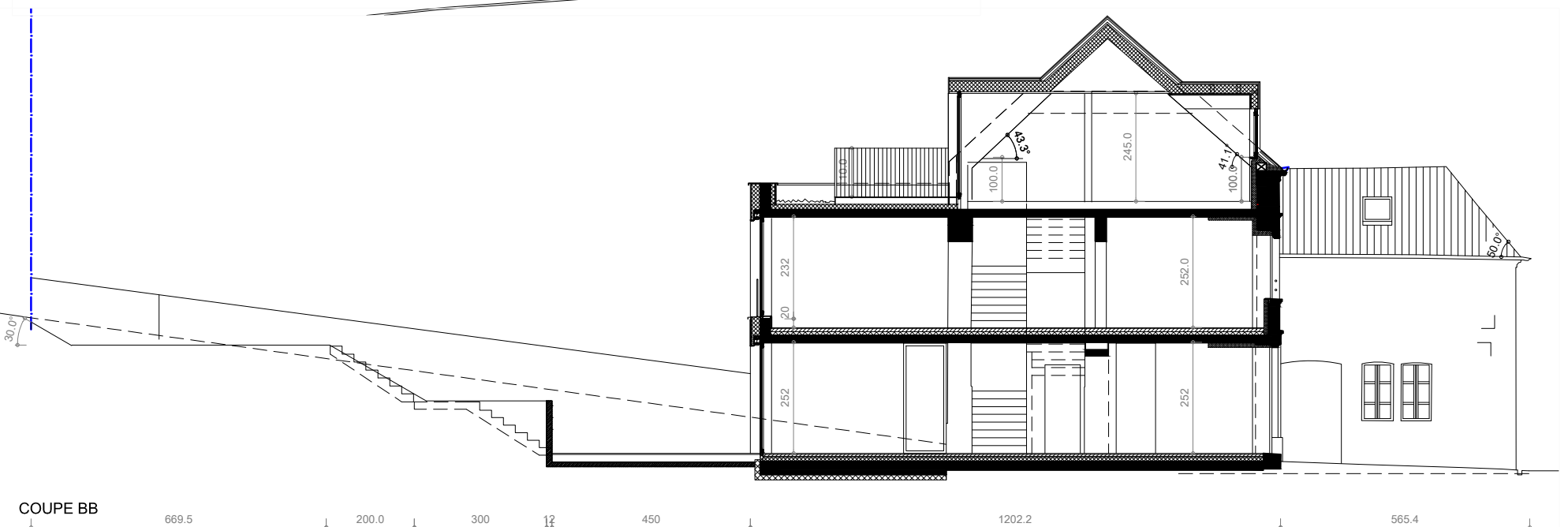
-Maison 5-

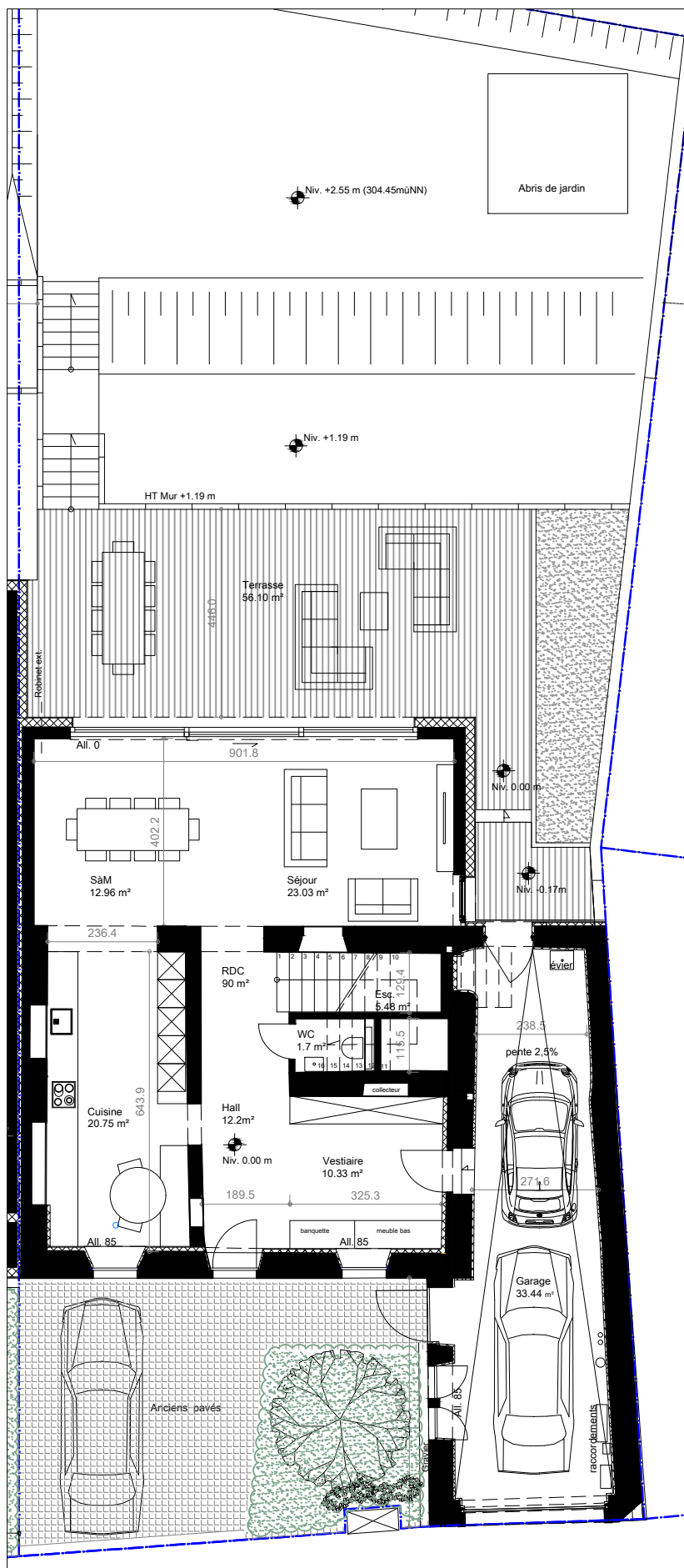
5e, rue des Prés

L-6150 Altlinster

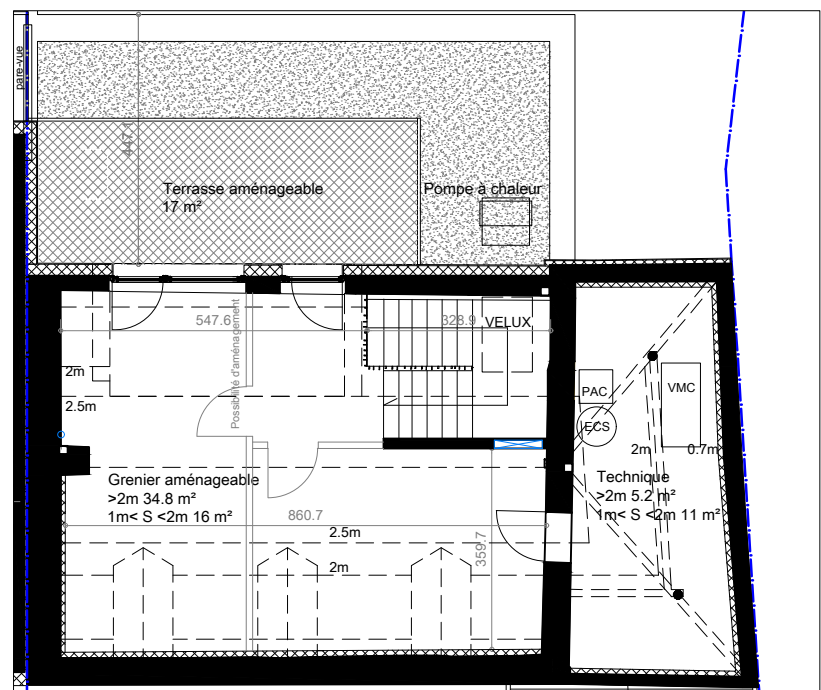


SURFACE TERRAIN	444m ²
SURFACE HABITABLE	213m ²
SURFACE GARAGE	33.44m ²
SURFACE GRENIER AMENAGEABLE	>2m 34.8m ²
	1m < S < 2m 16m ²
SURFACE TERRASSE	73.1m ²
SURFACE JARDIN	130m ²

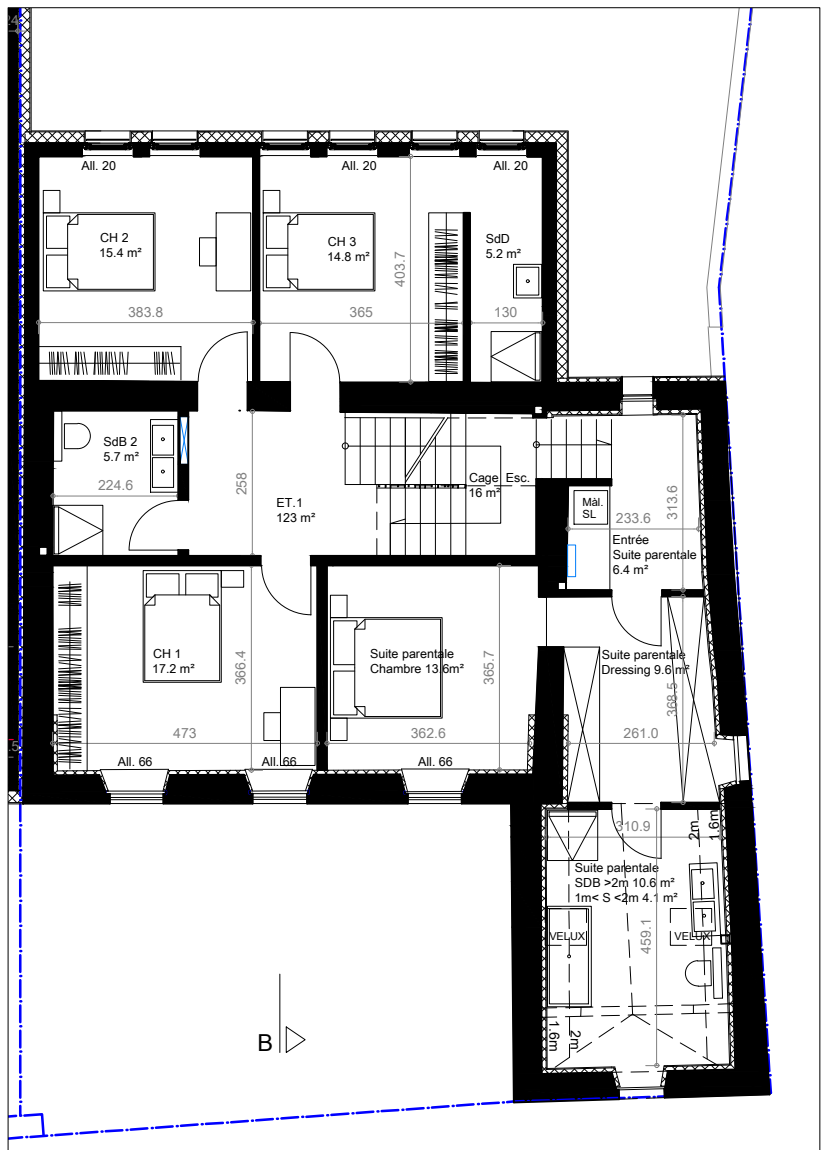




Maison 5 - NIVEAU 0



Maison 5 - NIVEAU +2



Maison 5 - NIVEAU +1

